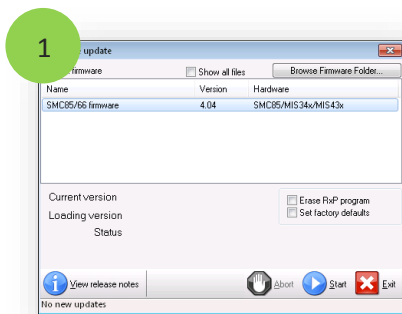
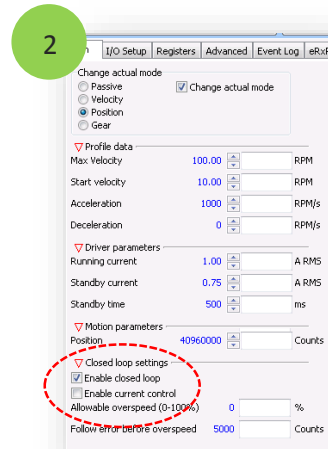


## MIS/MIL 17/23/34/43 - "Closed loop error"

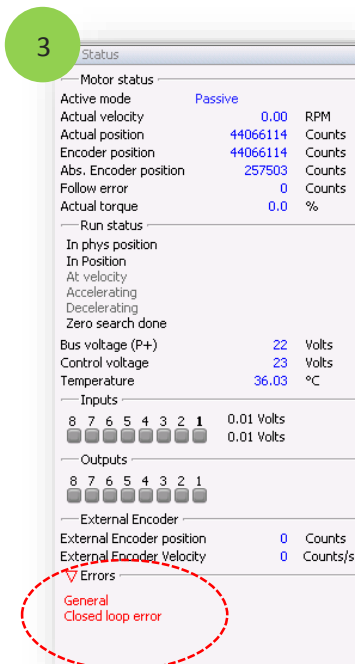
From firmware 4.04 the **closed loop** algorithm has been improved for higher stability and more symmetrical behavior. Due to this change, a new calibration on the motor is required in order to have it running in **closed loop**. This quick guide explains how to firmware update and perform the calibration.



Update the motor to version 4.04 or newer.



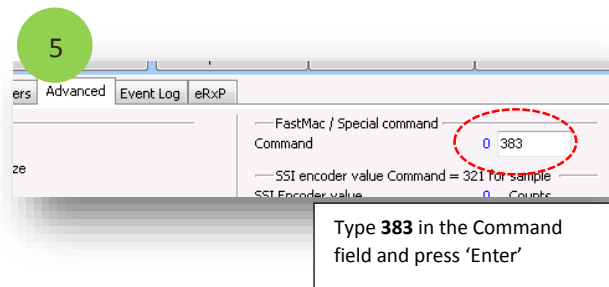
Make sure 'Closed loop' is enabled.



The "Closed loop error" appears.



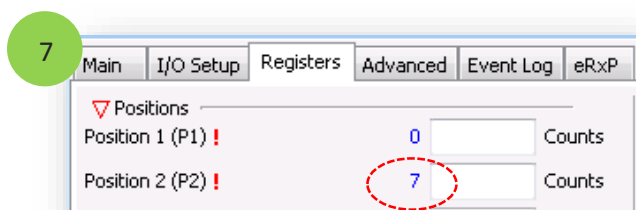
Unmount any mechanical load from the shaft because the motor must be able to move freely.



Type 383 in the Command field and press 'Enter'



Wait ~60 seconds for the calibration to complete.



When the motor stands still, the Position 2 register holds the value 7 (click on the blue number to update).

After a power cycle or software reset, the motor is ready for closed loop.