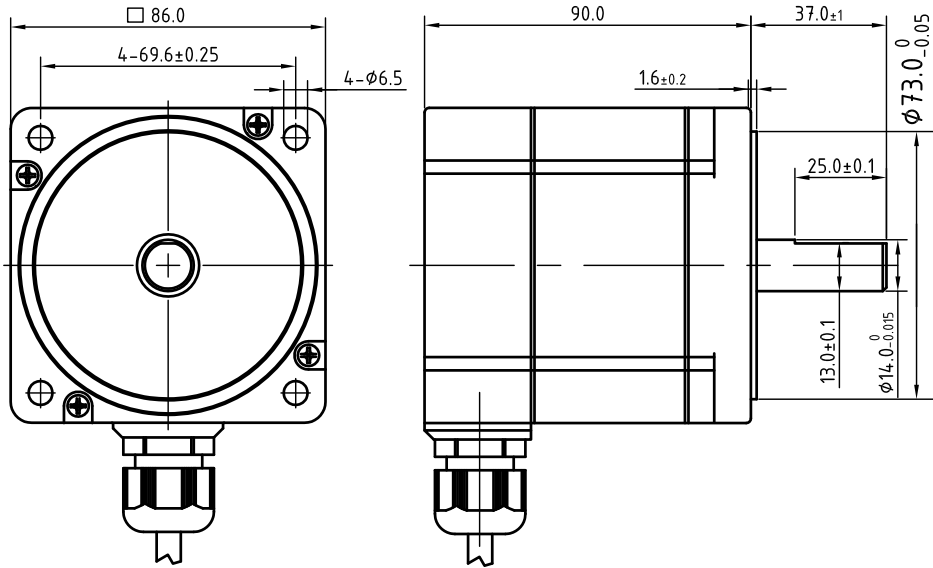
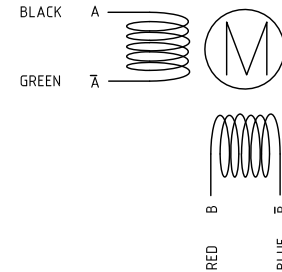


DIMENSIONS unit=mm



MOTOR CONNECTIONS



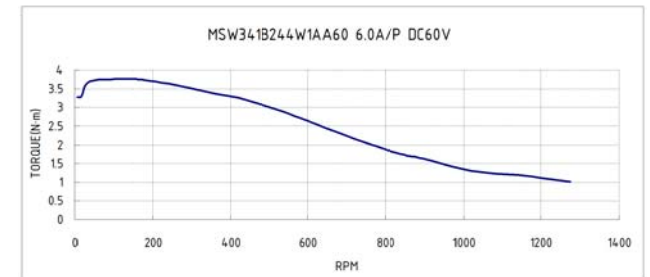
COMMON RATINGS

Step angle	1.8°
Position accuracy	1.8°±0.09°
Number of phase	2
Temp rise(Max)	80°C
Dielectric strength	500VDC
Insulation resistance	100MΩ(500VDC)
Radial play	Max 0.025mm(Load 450g)
Axial play	Max 0.075mm(Load 920g)
Insulation class	B
Protection level	IP67 (IP65 optional)

SPECIFICATION

MSW341B244W1AA60	
Current/phase: A	6.0
DC Resistance: Ω±10%	0.4
Inductance/phase:mH±20%	3.2
Holding torque: N.m	5.0
Inertia: Kg.cm ²	1.82
Weight: Kg	2.5

Speed-Torque Curve



E			UNIT:mm		Approve			 <small>JVL Industri Elektronik A/S +45 4582 4440 - jvl@jvl.dk JVL Deutschland +49 7321 1377260 - jan.tausend@jvl.dk JVL UK Ltd +45 45824440 - jvl@jvl.dk JVL USA +1 513 877 3134 - mfisher@jvlusa.com</small>
D			FIRST ANGLE VIEW		Standard			
C			MSW341B244W1AA60		Technology			
B						Check		
A	The first version	2013.11.22			Design		2013.11.22	
REV:	REVISION RECORD	DATE			NAMES	SIGNATURE	DATE	MODEL: