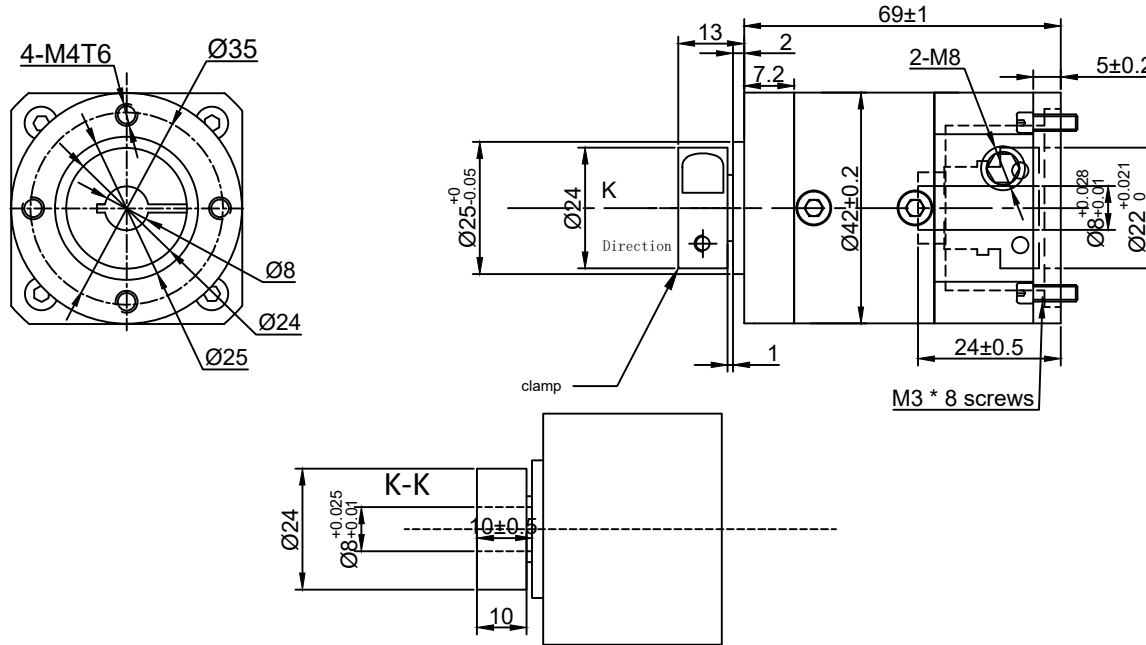
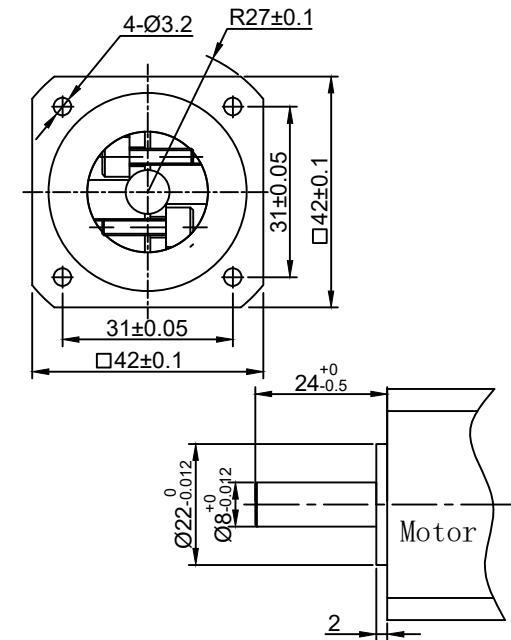


Output



Input



Transmission ratio	( ) : 1	Moment of inertia	( ) Kg.cm <sup>2</sup>
Rated output torque	( ) Nm	Max. Output torque	( ) Nm
Rated input speed	3000 rpm	Max input speed	4000 rpm
Max. radial force	180 N	Max. axial force	150 N
Efficiency	≥ 95%	Operating temperature	-15°~+80°
Installation ways	Any	Lubrication method	Synthetic grease
Weight ±3%		Lifespan	20000 h
Standard backlash	≤ Arcmin	Protection class	
		Noise level	
The matched motor dimensions:	Ø8*24/Ø22*2/F31-M3*3.5		

Selection (✓)	Type	Ratio	Moment of inertia (Kgc <sup>2</sup> )	Rated output torque (Nm)
	HSHG05N020MHH17X5_39	20:1	0.092	12

Mark	No.	Zone	Modified Document No.	Signature	Date
Draw					2021.05.26
Modification					
Check					
Approval					2021.05.26

Views:		
Stage Mark	Ratio	
	1:1	
HSHG05N020MHH17X5_39		