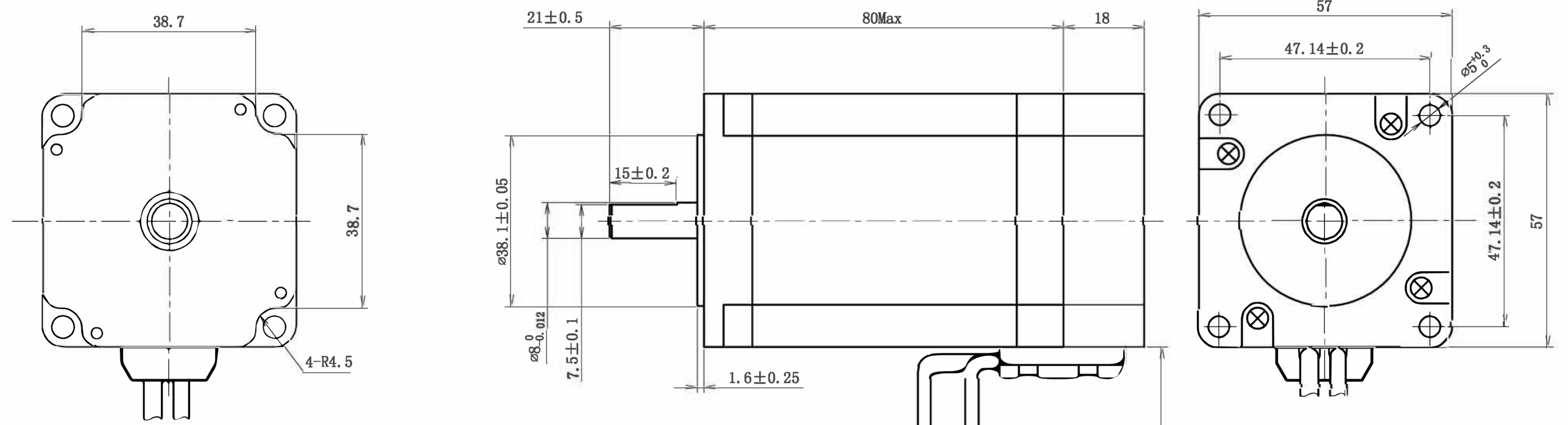
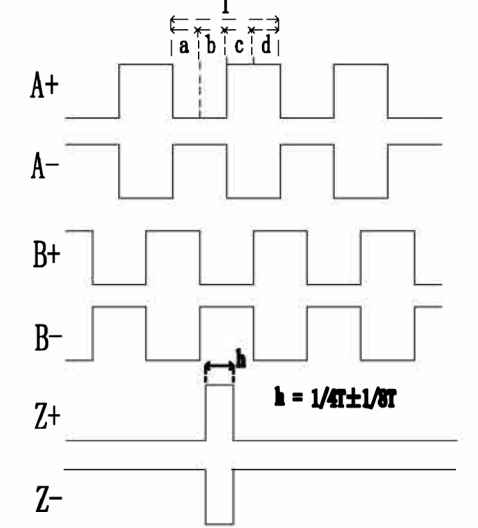


REVISION		



OUTPUT WAVE FORM $a, b, c, d = 1/4T \pm 1/8T$

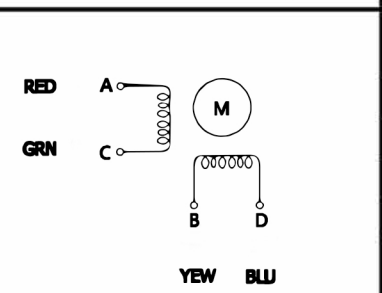


ENCODER CONNECTION		
ENCODER 1000P/R		
1. GREEN		A+
2. GRE/BLK		A-
3. WHITE		B+
4. WHI/BLK		B-
5. YELLOW		Z+
6. YEL/BLK		Z-
7. RED		Acc +5V
8. BLACK		GND
9. SHIELD		

Step Angle	1.8°±5%
Number of Phase	2
Rated Voltage	2.5 V
Rated Current/Phase	4.2 A (Peak Value)
Holding Torque	20 kg-cm Min.
Detent Torque	600g-cm
Phase Resistance	0.6Ω±0.1%(20°C)
Phase Inductance	2.2mH±20%(1kHz 1V RMS)
Dielectric Strength	AC 500V/ 1min / 5mA Max.
Rotor Inertia	550 g-cm ²
Weight	2.0kg
Insulation Class	B (130°) 80K Max.



Wiring Diagram



Exciting Sequence

CW		→			
RED	A+	+		-	
GRN	A-	-		+	
YEW	B+		+		-
BLU	B-		-		+
CCW		←			

UNLESS OTHERWISE SPECIFIED ALL DIMENSIONS ARE IN MILLIMETERS AND TOLERANCES ARE AS BELOW PER ISO2768-MK

(unit mm)	(unit mm)	(unit mm)	(unit mm)
0 ~ 3	±0.2	0 ~ 10	±1.5°
3 ~ 6	±0.5	10 ~ 50	±1°
6 ~ 30	±0.8	50 ~ 120	±30'
30 ~ 120	±1.5	120 ~ 400	±15'

SIZE	A3	SHEET	1 OF 1	
SCALE	1 : 1	REV	00	