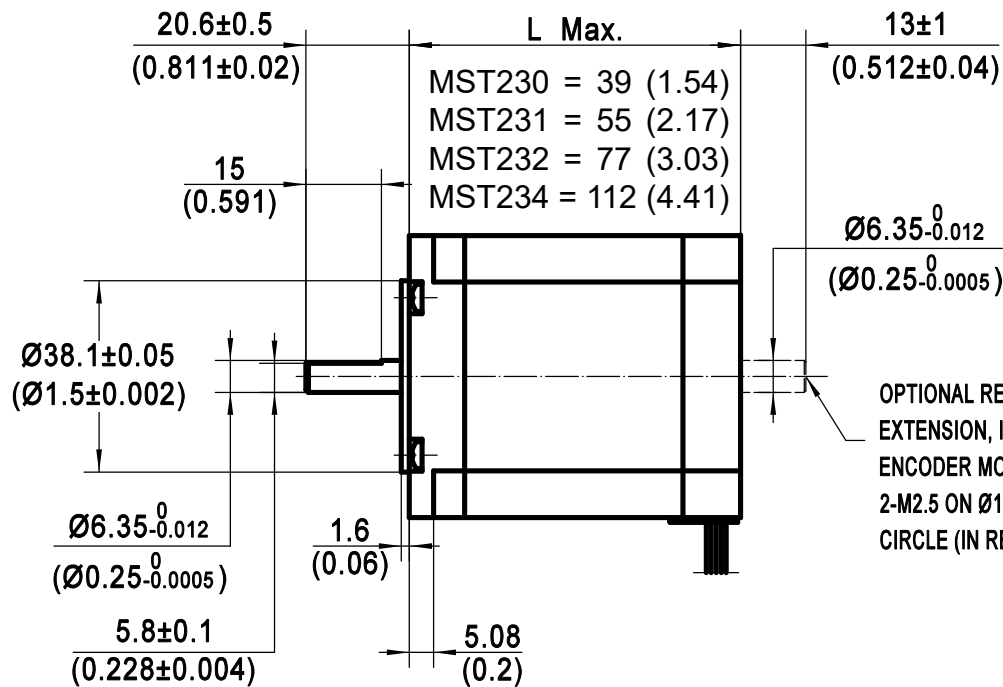
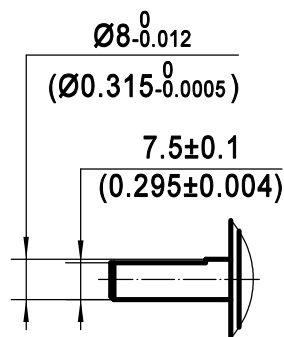


For MST23xx43..



$4-\varnothing 5.1^{+0.2}_{0}$
($4-\varnothing 0.2^{+0.008}_{0}$)

$\varnothing 6.35^{0}_{-0.012}$
($\varnothing 0.25-0.0005$)

OPTIONAL REAR SHAFT
EXTENSION, INCLUDES
ENCODER MOUNTING:
2-M2.5 ON $\varnothing 19.05(0.75)$ BOLT
CIRCLE (IN REAR ENDBELL)

