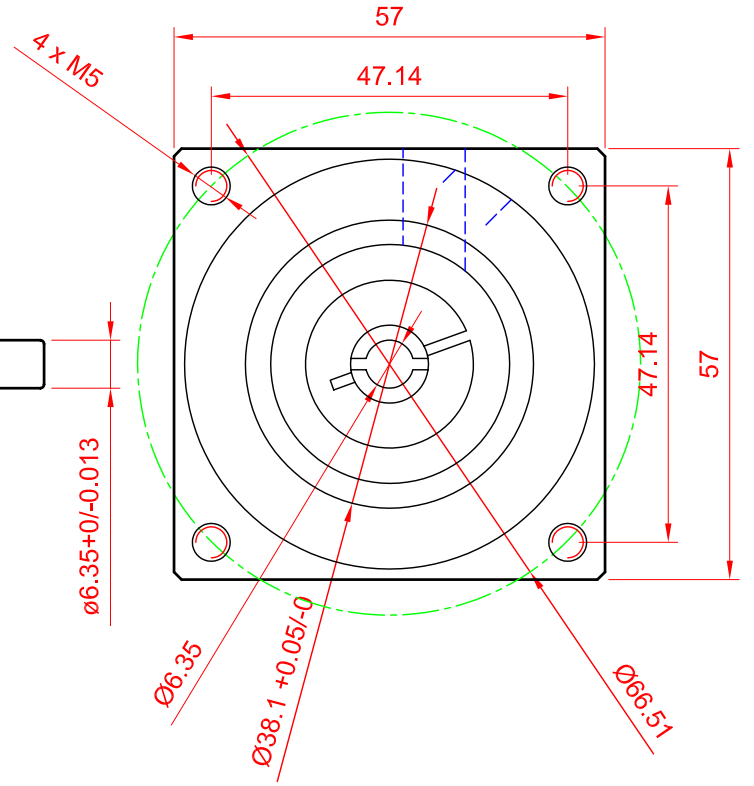
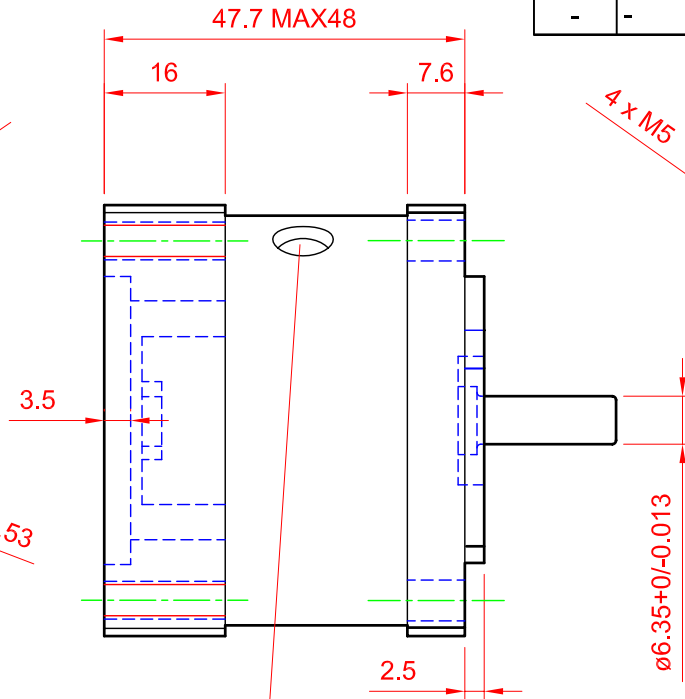
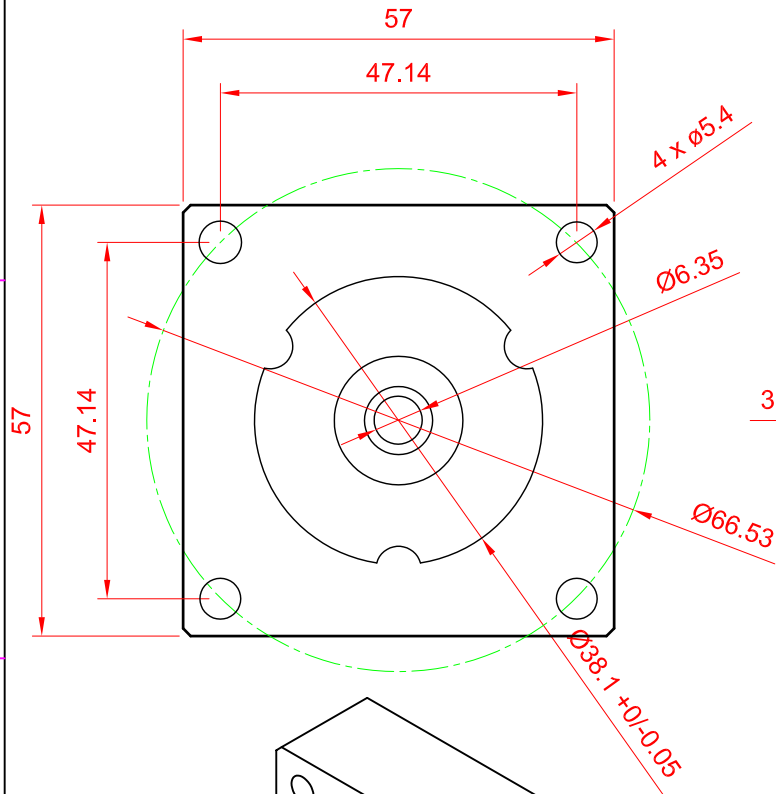
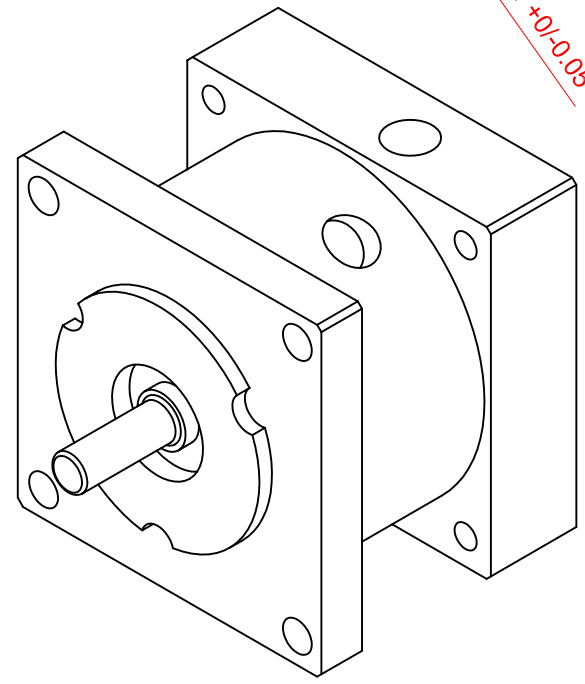


Ref. No.	Revision	Date	Sign.
-	-	-	-




Wire lenght 500 mm



Specifications:

Voltage: 24 VDC
 Static Torque: 0.5 Nm
 Rated current: 0.31A
 Power: 7.3 W
 Resistance: 78 Ohm
 Start voltage: 15 VDC

Scale 1 : 1 A4	 <p>JVL Industri Elektronik. Integration In Motion</p> <p>Blokken 42 DK-3460 Blfkerød, Denmark Phone: +45 45 82 44 40 Fax: +45 45 82 55 50 E-mail: jvl@jvl.dk http://www.jvl.dk</p>	<p>Brake 24V for NEMA23 0.5 Nm ø6.35 wire 500 mm</p>	<p>Draw No. MAB23x-90</p>
<p>Drawn by PCR</p> <p>Date 250810</p> <p>Checked</p> <p>Approved</p>			

Draw No. **MAB23x-90**