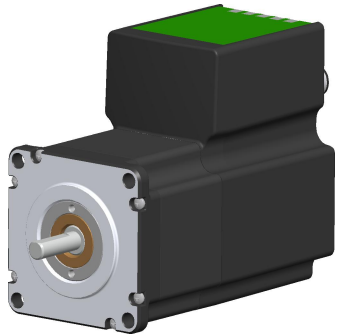
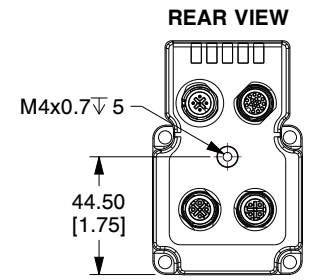
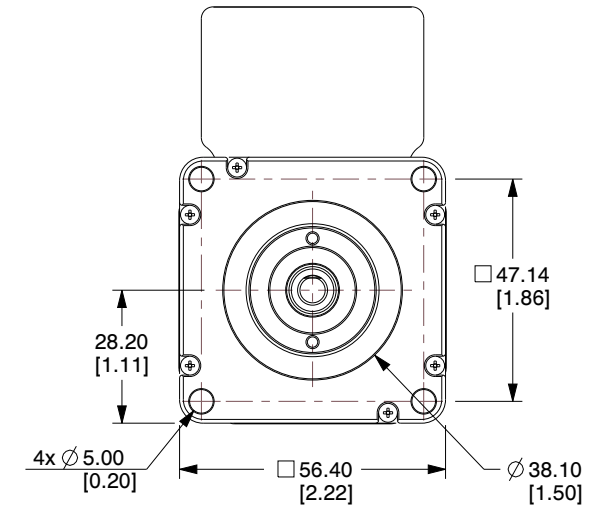
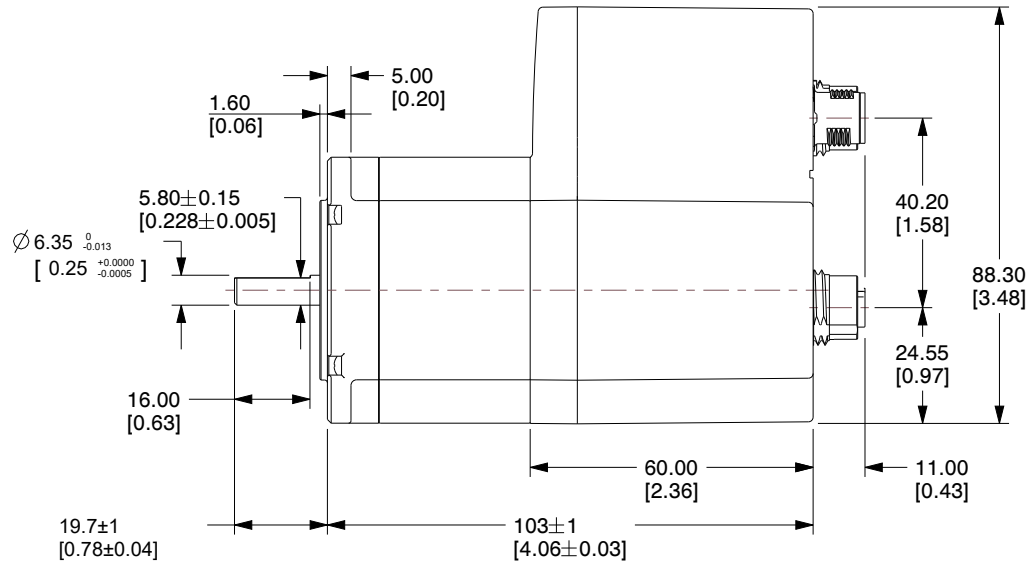




NOTES:

1. Tolerance for torque and power is $\pm 10\%$
2. Shaft - AISI 303 Stainless steel
3. Front Bearing: 3202-2RS Double row angular contact



| PRODUCT SPECIFICATIONS | | | | JVL A/S Bregnerødvej 127 DK-3460 Birkerød Denmark | |   | |
|------------------------|-----------------|---------------|------------------------------|-------------------------------------------------------------|-----------|-----------------------------------------------------------------------------------------------------------------------------------------------------------------------------|----|
| Resolution | 409600 cnt/rev | Weight | 1.1 kg | PART NUMBER: MIS231Q8EPH466 | | | |
| RPM | 3000 RPM | Protection | Shaft: IP42, Motor: IP42 | | | | |
| Running Torque | 0.97 Nm | Power Supply | SMC66 Controller 6A 12-72VDC | PART DESCRIPTION: Integrated Stepper Motor | | | |
| Power @72VDC | 177 Watts | Rated Voltage | 12-72 VDC | | | | |
| Connector Type | Axial Connector | Connection | Profinet | UNITS | MM [Inch] | SIZE | A4 |

Unless specifically stated otherwise, this drawing is the property of JVL A/S and no feature embodied herein may be disclosed except as previously authorized