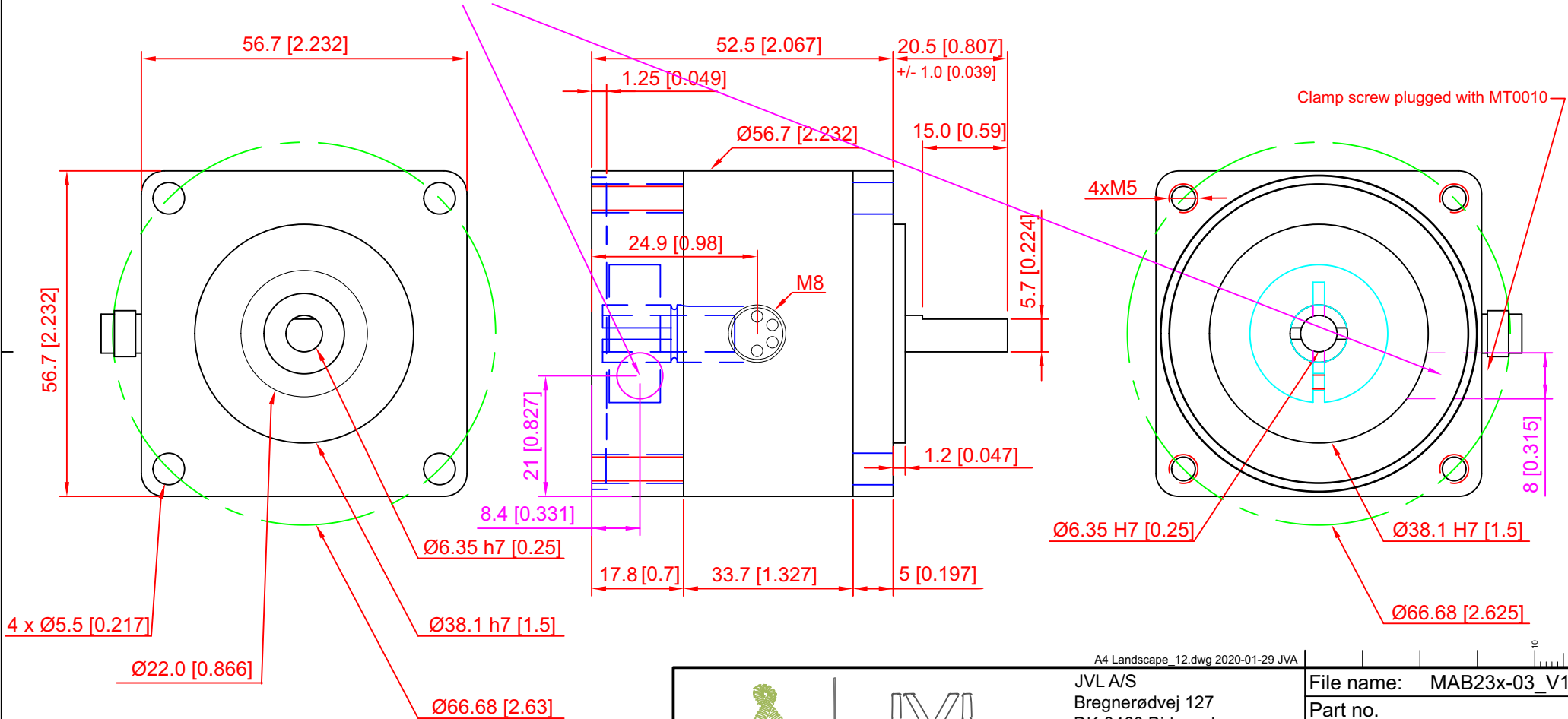


Revision	Note	Date + init
1.3	Updated	2022-07-18 PCR



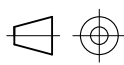
2020-01-29 JVA: Design Change Notification:
 Ultimo 2020 the clamp screw hole will be on same side as connector and have diameter 8mm.



Shaft Collar Screw Torque (M3): 2Nm
 Max transfer torque: 2.8Nm
 Brake torque: 1.5Nm

All dimension in mm [inch]
 General tolerance is +/-0.3 mm [+/-0.008]

A4 Landscape_12.dwg 2020-01-29 JVA

 		JVL A/S Bregnerødvej 127 DK-3460 Birkerød Tel: +45 4582 4440 Email: jvl@jvl.dk		File name: MAB23x-03_V1.3 Part no.	
		MAB23x-03		Description Brake 24V for NEMA23 ID6.35/OD6.35 M8 1.5Nm	
Drw	PCR	Date	2022-07-22	Unit	mm
App	PCR	Date	2022-07-22	Scale	1:1
ERP	-	-	-		A4
Tolerances Unless Specified		Linear			
Angles		±3°			