



...when motors must be controlled

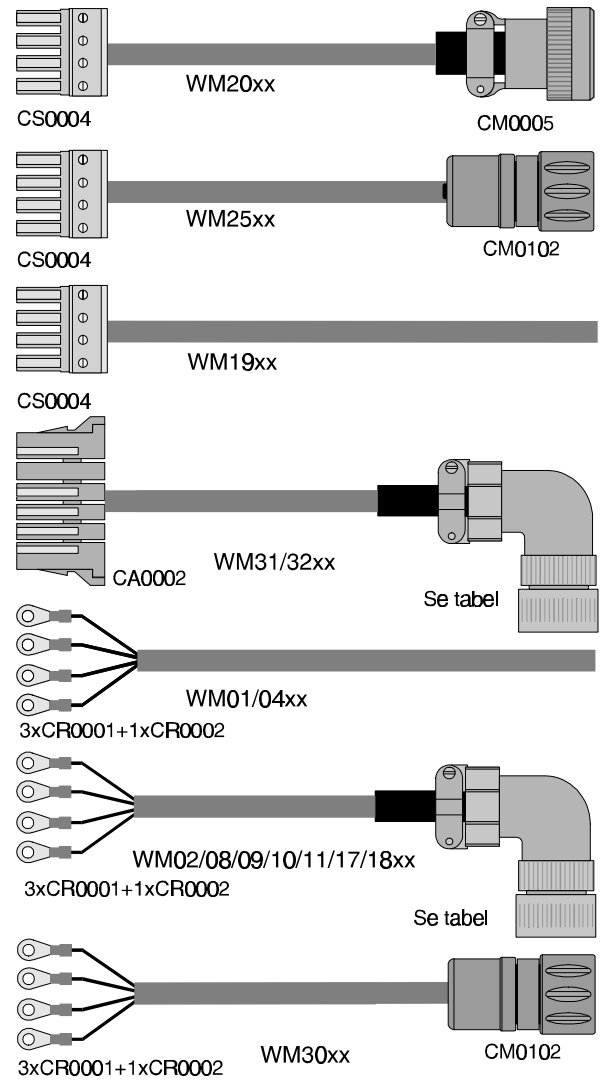
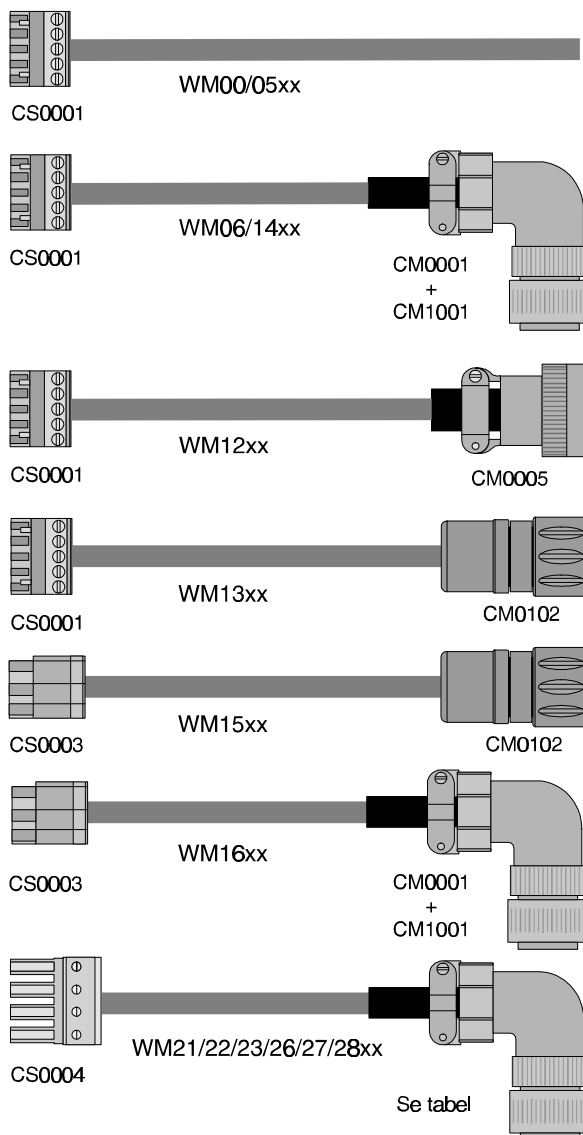
Kabler for forbindelse mellem Driver/Controller og Enkoder/Motor

Motorkabler

Motorkablernes bestillingsnumre er opbygget på følgende måde:

WM	xx	xx	-02
Angiver motorkabel	Bestillingsnummer	Længde i meter	Motorer m. bremse

Kablerne kan bestilles i standardlængder af 3, 5, 10, 15 og 20 meter. Efter ønske kan vi levere kabler i andre længder med 1m interval. Robotkabel er højflexibelt og skal anvendes hvis kablet bevæger sig. Kabeltyper er angivet i tabellen. Eksempel: WM0105-02 er et 5 meter langt motorkabel af type 01 til en motor med bremse. (Stikkene kan dog være ændret)



Kabler til motorer med bremse er forsynet med ekstra kabel med 2 ledere.

Motorkabler - Oversigt

Type (Best, nr.)	Controller/ Driver fabrikat	Controller/ Driver type	Motortype	Kabel Best. nr.	Kabel type	Konnektorer
WM00xx	JVL	AMC1x	SGM/SGMP 1)	WW0300	Standard	CS0001/løs ende
WM01xx	Yaskawa	SGDA/SGDE	SGM/SGMP/SGME 1)	WW0300	Standard	3xCR0001+1xCR0002/løs ende
WM02xx	Yaskawa	SGDB	SGMG/SGMS 2)	WW0304	Standard	3xCR0001+1xCR0002/CM0001
WM03xx	Specialkabler				ifølge ordre	lfølge ordre
WM04xx	Yaskawa	SGDA/SGDE	SGM/SGMP/SGME 1)	WW0301	Robot	3xCR0001+1xCR0002/løs ende
WM05xx	JVL	AMC1x	SGM/SGMP 1)	WW0301	Robot	CS0001/løs ende
WM06xx	JVL	AMC1x	SGMG/SGMS 2)	WW0303	Robot	CS0001/CM0001+CM1001
WM08xx	Yaskawa	SGDB	SGMG/SGMS 2)	WW0301	Robot	3xCR0001+1xCR0002/CM0001+CM1001
WM09xx	Yaskawa	SGDB	SGMG/SGMS 4)	WW0303	Robot	3xCR0001+1xCR0002/CM0008+CM1006
WM10xx	Yaskawa	SGDB	SGMG/SGMS 5)	*)	Robot	3xCR0001+CR0002/*)
WM11xx	Yaskawa	SGDB	SGMG/SGMS 4)	WW0304	Standard	3xCR0001+2xCR0002/CM0008+CM1006
WM12xx	JVL	AMC1x	BLS70	WW0301	Robot	CS0001/CM0005
WM13xx	JVL	AMC1x	SGMAH/SGMPH 9)	WW0301	Robot	CS0001/CM0102
WM14xx	JVL	AMC1x	SGMGH/SGMSH 11)	WW0301	Robot	CS0001/CM0001+CM1001
WM15xx	Yaskawa	SGDH	SGMAH/SGMPH 9)	WW0301	Robot	CS0003/CM0102
WM16xx	Yaskawa	SGDH	SGMGH/SGMSH 11)	WW0301	Robot	CS0003/CM0001+CM1001
WM17xx	Yaskawa	SGDH	SGMGH/SGMSH 12)	WW0303	Robot	3xCR0001+1xCR0002/CM0001+CM1001
WM18xx	Yaskawa	SGDH	SGMGH/SGMSH 13)	WW0303	Robot	3xCR0001+1xCR0002/CM0008+CM1006
WM19xx	JVL	AMC2x	SGM/SGMP 1)	WW0301	Robot	CS0004/løs ende
WM20xx	JVL	AMC2x	BLS70	WW0301	Robot	CS0004/CM0005
WM21xx	JVL	AMC2x	SGMG/SGMS 2)	WW0303	Robot	CS0004/CM0001+CM1001
WM22xx	JVL	AMC2x	SGMG/SGMS 4)	WW0302	Robot	CS0004/CM0008+CM1006
WM23xx	JVL	AMC2x	SGMG/SGMS 5)	*)	Robot	CS0004/*)
WM25xx	JVL	AMC2x	SGMAH/SGMPH 9)	WW0301	Robot	CS0004/CM0102
WM26xx	JVL	AMC2x	SGMGH/SGMSH 11)	WW0301	Robot	CS0004/CM0001+CM1001
WM27xx	JVL	AMC2x	SGMGH/SGMSH 12)	WW0303	Robot	CS0004/CM0001+CM1001
WM28xx	JVL	AMC2x	SGMGH/SGMSH 13)	WW0303	Robot	CS0004/CM0008+CM1006
WM29xx	Yaskawa	SGDF	SGMM	*)	*)	*)/*)
WM30xx	Yaskawa	SGDH	SGMP 10)	WW0303	Robot	3xCR0001+1xCR0002/CM0102
WM31xx	Yaskawa	SGDC	SGMG/SGMS 6)	WW0301	Robot	CA0002/CM0001+CM1001
WM32xx	Yaskawa	SGDC	SGMG/SGMS 7)	WW0303	Robot	CA0002/CM0008+CM1006
WM33xx	Yaskawa	SGDC	SGMG/SGMS 8)	WW0302	Robot	3xCR0001+1xCR0002/CM0003+CM1006

- 1) SGM/E-motorer 30 - 750 W + SGMP-motorer 100 - 1500 W
 - 2) SGMG-motorer 0,5 - 0,9 - 1,3 kW + SGMS-motorer 1,0 - 1,5 kW
 - 3) SGMS-motorer 2,0 kW
 - 4) SGMG-motorer 2,0 - 3,0 kW + SGMS motorer 3,0 kW
 - 5) SGMG-motorer 4,4 - 5,5 - 7,5 - 11 - 15 kW + SGMS motorer 4,0 - 5,0 kW
 - 6) SGMG-motorer 0,5 - 0,9 - 1,3 kW + SGMS-motorer 1,0 - 1,5 - 2,0 kW
 - 7) SGMG-motorer 2,0 - 3,0 kW + SGMS motorer 3,0 kW
 - 8) SGMG-motorer 4,4 kW + SGMS-motorer 4,0 - 5,0 kW
 - 9) SGMAH-motorer 30 - 750 W + SGMPH-motorer 100 - 750 W
 - 10) SGMPH-motorer 1500 W (230 V)
 - 11) SGMGH-motorer 0,5 - 0,9 - 1,3 kW + SGMSH-motorer 1,0 - 1,5 kW (400 V)
 - 12) SGMSH-motorer 2,0 kW (400 V)
 - 13) SGMGH-motorer 2,0 - 3,0 kW + SGMS-motorer 3,0 kW (400 V)
- *) Specialkabler - angiv motortype og størrelse

Enkoderkabler

Enkoderkabler

Enkoderkablerne bestilles på følgende måde:



Kablerne kan bestilles i standard-længder af 3, 5, 10, 15 og 20 meter.

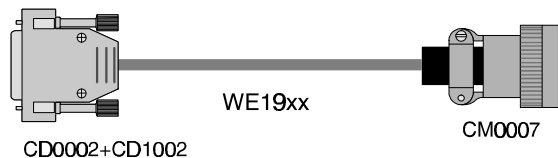
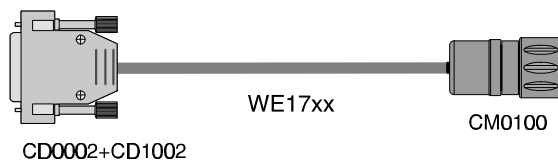
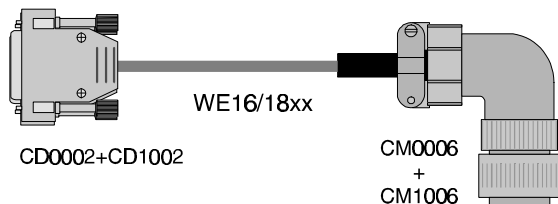
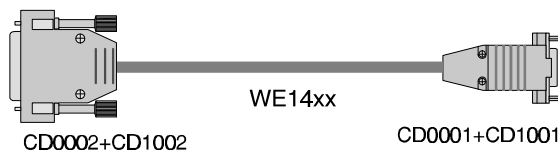
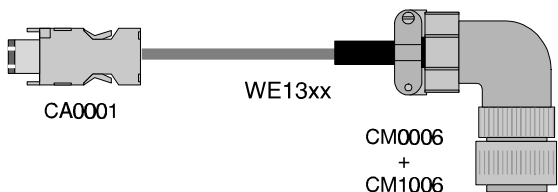
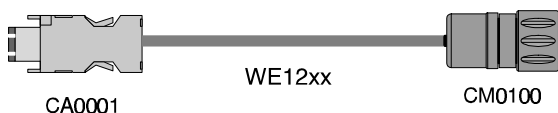
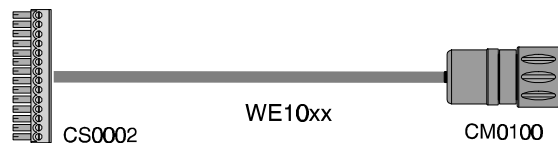
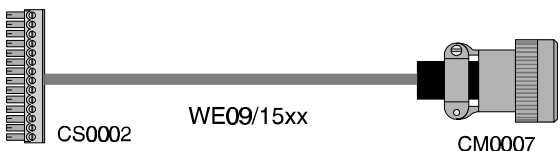
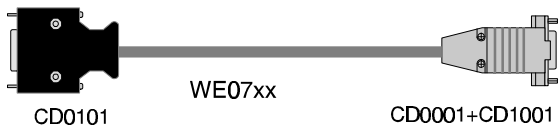
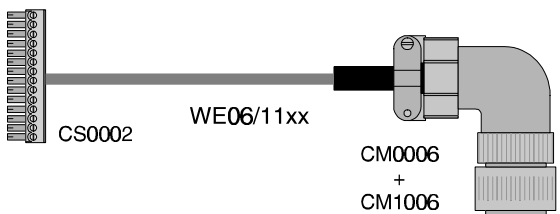
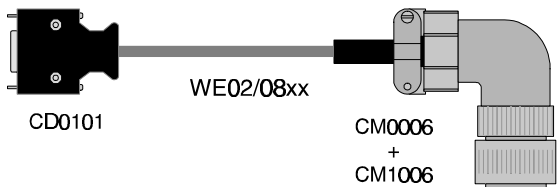
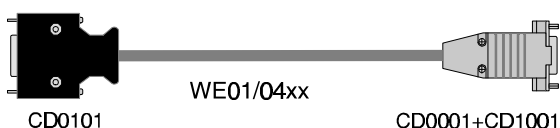
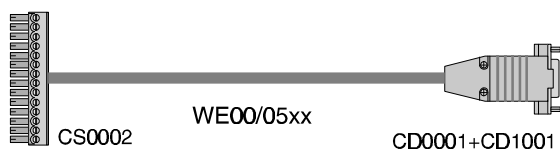
Efter ønske kan vi levere kabler i andre længder med 1m interval.

Robotkabel er højflexibelt og skal anvendes hvis kablet bevæger sig.

Kabeltyper er angivet i tabellen.

Eksempel:

WE0105 er et 5 meter langt enkoderkabel af type 01.



Enkoderkabler - Oversigt

Type (Best, nr.)	Controller/ Driver fabrikat	Controller/ Driver type	Motortype	Kabel Best. nr.	Kabel type	Konnektorer
WE00xx	JVL	AMC1x	SGM/SGMP	WW0000	Standard	CS0002/CD0001+CD1001
WE01xx	Yaskawa	SGDA/F	SGM/SGMP/SGMM	WW0000	Standard	CD0101/CD0001+CD1001
WE02xx	Yaskawa	SGDB/SGDC	SGMG/SGMS	WW0000	Standard	CD0101/CM0006+CM1006
WE03xx	Specialkabler				Ifølge ordre	Ifølge ordre
WE04xx	Yaskawa	SGDA/F	SGM/SGMP /SGMM	WW0001	Robot	CD0101/CD01+CD1001
WE05xx	JVL	AMC1x	SGM/SGMP /SGMM	WW0001	Robot	CS0002/CD0001+CD1001
WE06xx	JVL	AMC1x	SGMG/SGMS	WW0001	Robot	CS0002/CM0006+CM1006
WE07xx	Yaskawa	SGDA/F	SGM/SGMP /SGMM	WW0001	Robot	CD0101/CD0001+CD1001
WE08xx	Yaskawa	SGDB/SGDC	SGMG/SGMS	WW0001	Robot	CD0101/CM0006+CM1006
WE09xx	JVL	AMC1x	BLS70	WW0001	Robot	CS0002/CM0007
WE10xx	JVL	AMC1x	SGMAH/SGMPH	WW0002	Robot	CS0002/CM0100
WE11xx	JVL	AMC1x	SGMGH/SGMSH	WW0002	Robot	CS0002/CM0006+CM1006
WE12xx	Yaskawa	SGDH	SGMAH/SGMPH	WW0002	Robot	CA0001/CM0100
WE13xx	Yaskawa	SGDH	SGMGH/SGMSH	WW0002	Robot	CA0001/CM0006+CM1006
WE14xx	JVL	AMC2x	SGM/SGMP	WW0001	Robot	CD0002+CD1002/ CD0001+CD1001
WE15xx	JVL	AMC2x	BLS70	WW0001	Robot	CD0002/CM0007
WE16xx	JVL	AMC2x	SGMG/SGMS	WW0001	Robot	CD0002+CD1002/ CM0006+CM1006
WE17xx	JVL	AMC2x	SGMAH/SGMPH	WW0002	Robot	CD0002+CD1002/CM0100
WE18xx	JVL	AMC2x	SGMGH/SGMSH	WW0002	Robot	CD0002+CD1002/ CM0006+CM1006
WE19xx				WW0001	Robot	CD0002+CD1002/CM0007

Forhandler