



ServoStep

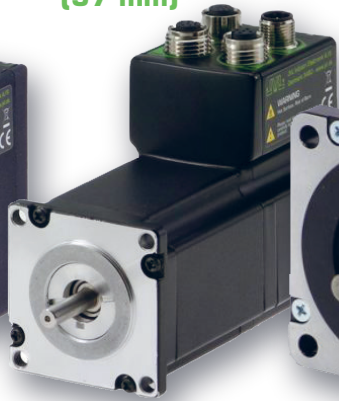
State of the art next generation integrated stepper motors

NEMA 17
(42 mm)



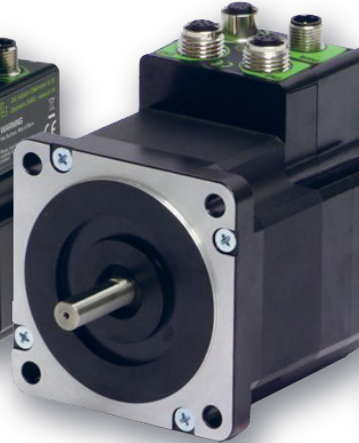
0.8 Nm

NEMA 23
(57 mm)



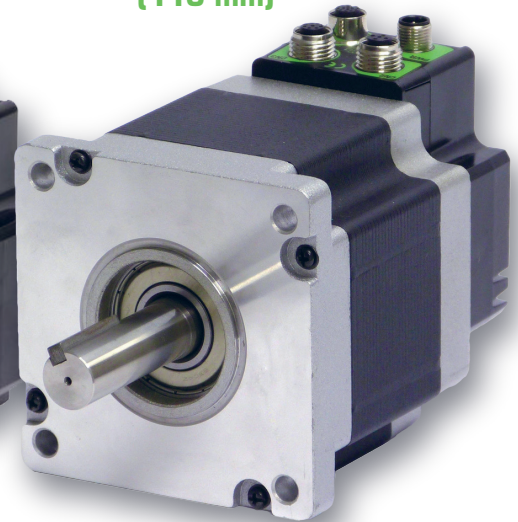
3 Nm

NEMA 34
(87 mm)



12 Nm

NEMA 43
(110 mm)



25 Nm

JVL Industri Elektronik A/S is proud to announce a complete new generation of integrated steppers.

This new motor family is based on previous designs and customer feedback collected for many years and offers a wide pallet of options and possibilities which makes this range great for positioning, indexing and format change applications.

Key features:

- Absolute multiturn encoder
- Closed-loop (Stall free - no steps lost)
- 0-3000 RPM in 0.01 RPM steps
- Very high torque
- STO Safe Torque Off
- Embedded Ethernet switch
- High resolution 409600 cn/rev.
- Smooth and silent running
- Protection up to IP65
- High positioning precision
- 100% automatic setup
- Supply voltage 7-72 VDC

EtherNet/IP™



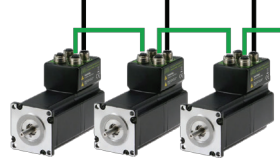
- 8 Analog
- Wireless
- RS485
- Pulse I/O
- Dual Supp.
- 8 I/O
- M12



Rockwell Automation

Encompass™
Product Partner

Europe • Middle East • Africa



Integrated Stepper Motors

NEMA 17				23						
	MIS171	MIS173	MIS176		MIS231S	MIS232S	MIS234S	MIS231T	MIS232T	
Main motor type	MIS171	MIS173	MIS176		MIS231S	MIS232S	MIS234S	MIS231T	MIS232T	
Holding torque	0.15 [21]	0.26 [37]	0.8 [113]		0.97 [137]	1.97 [279]	3.08 [436]	1.16 [164]	2.53 [358]	Nm [Oz-in]
Resolution	409600	409600	409600		409600	409600	409600	409600	409600	Counts per rev.
Supply voltage (main)	7-72	7-72	7-72		7-72	7-72	7-72	7-72	7-72	VDC
Supply voltage*	12-28	12-28	12-28		12-28	12-28	12-28	12-28	12-28	VDC
Max supply current (main) @24 / 48 / 80VDC	1.2	2	3.2		5.1	4.5	4.1	6.7 / 6.3 / 5.6	5.9 / 6.1 / 6.2	ADC RMS
Nominal speed range	0.01 - 3000	0.01 - 3000	0.01 - 3000		0.01 - 3000	0.01 - 3000	0.01-3000	0.01-3000	0.01-3000	RPM
Rated mechanical power**	25	42	116		177	221	211	199	315	W
Rotor inertia					2.7 [0.0381]	4.0 [0.0564]	5.3 [0.0750]	5.5 [0.0778]	16.2 [0.2292]	kg-cm ² /oz-in-s ²
Flange dimensions	42x42 [1.7]	42x42 [1.7]	42x42 [1.7]		57x57 [2.3x2.3]	57x57 [2.3x2.3]	57x57 [2.3x2.3]	57x57 [2.3x2.3]	57x57 [2.3x2.3]	mm [Inch]
Length	71.5 [2.81]	78.8 [3.10]	105.1 [4.14]		103 [4.96]	124 [6.14]	161 [8.66]	103 [7.72]	124 [9.72]	mm [inch]
Shaft diameter	ø5 [0.197]	ø5 [0.197]	ø8 [0.315]		ø6.35 [0.25]	ø6.35 [0.25]	ø10 [0.3937]	ø6.35 [0.25]	ø10 [0.3937]	mm [inch]
Weight	0.54 [1.19]	0.68 [1.50]	0.90 [1.98]		1.1 [2.43]	1.4 [3.09]	2.0 [4.41]	1.1 [2.43]	1.4 [3.09]	kg [lb]
Protection class	IP55 (IP65 Optional)									

* control and main I/O ** Max power @ 72 VDC

Integrated Stepper Motors

NEMA 34						43				
	MIS340	MIS341	MIS342	MIS343	MIL34		MIS430	MIS432	SMC85	
Main motor type	MIS340	MIS341	MIS342	MIS343	MIL34		MIS430	MIS432	SMC85	
Holding torque	3.0 [425]	6.1 [863]	9.0 [1274]	10.5 [1486]	2300 N		10 [1416]	25 [3539]		Nm [Oz-in]
Resolution	409600	409600	409600	409600	409600		409600	409600	409600	Counts per rev.
Supply voltage (main)	12-72	12-72	12-72	12-72	12-72		12-72	12-72	12-72	VDC
Supply voltage*	12-28	12-28	12-28	12-28	12-28		12-28	12-28	12-28	VDC
Max supply current (main) @24 / 48 / 80VDC	5.1 / 5.1 / 5.1	5.6 / 5.3 / 5.6	6.0 / 5.4 / 6.1	6.3 / 5.7 / 6.6	5.6 / 5.3 / 5.6		6.6	6.6	6.6	ADC RMS
Nominal speed range	0.01 - 3000	0.01 - 3000	0.01 - 3000	0.01-3000	0.01 - 3000		0.01-3000	0.01-3000		RPM
Rated mechanical power**	260	288	315	320	288		300	400		W
Rotor inertia	1.4 [0.0198]	2.7 [0.0381]	4.0 [0.0564]	5.3 [0.0750]			5.5 [0.0778]	16.2 [0.2292]		kg-cm ² /oz-in-s ²
Flange dimensions	87x87 [3.4x3.4]	87x87 [3.4x3.4]	87x87 [3.4x3.4]	87x87 [3.4x3.4]	87x87 [3.4x3.4]		110x110[4.3x4.3]	110x110[4.3x4.3]		mm [Inch]
Length	95.0 [3.74]	126.0 [4.96]	156.0 [6.14]	220 [8.66]			196 [7.72]	247 [9.72]		mm [inch]
Shaft diameter	ø9.53 [0.3752]	ø9.53 [0.3752]	ø14.0 [0.5512]	ø14 [0.5512]			ø19 [0.748]	ø19 [0.748]		mm [inch]
Weight	2.05 [4.52]	3.13 [6.9]	4.2 [9.26]	5.3 [11.68]			5.5 [12.13]	12.2 [26.90]		kg [lb]
Protection class	IP55 (IP65 Optional)									

* control and main I/O ** Max power @ 72 VDC

JVL Industri Elektronik A/S

JVL is a world leader within the development and production of efficient and compact integrated servo motors and integrated stepper motors.

Both the servo motor and stepper motor series includes the controller, Nano-PLC, encoder and bus system integrated into one compact unit. All industrial Ethernet protocols are available.

JVL Industri Elektronik A/S
 Bregnerødvej 127
 DK-3460 Birkerød
 Denmark
 Tel. +45 4582 4440
 E-mail: sales@jvl.dk
 Web: www.jvl.dk

