

Your voucher

for free entry to SPS IPC Drives 2017

Experience

products, innovations and trends: the entire spectrum of electric automation technology all under one roof – from components to entire system solutions.

Gain

a comprehensive market overview.
More than 1,650 exhibitors are awaiting you!

Profit

from the potential of digital transformation in production technology and find the individual Industrie 4.0 solution for your company!

Use this opportunity

and find optimal solutions for your automation tasks in personal talks with the exhibitors.

Exhibition topics

- Control technology
- IPCs
- Electric drive systems and components
- Human-machine-interface devices
- Industrial communication
- Software and IT in production
- Interface technology
- Mechanical infrastructure
- Sensor technology

Date 28 – 30 November 2017
Venue Exhibition Center Nuremberg
Entry ticket Register online now easily and free of charge! Please note the information on the reverse of this voucher.

Experience
Industrie 4.0
at first hand!

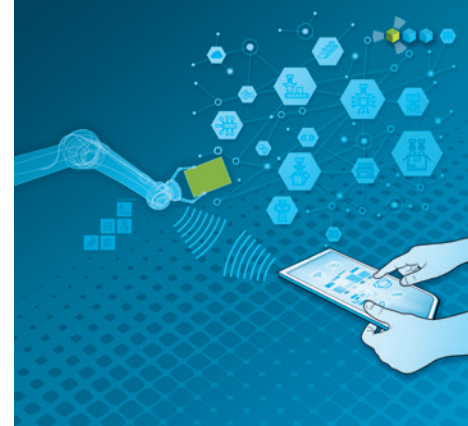
sps ipc drives



28th International Exhibition
for Electric Automation
Systems and Components

Nuremberg, 28 – 30 November 2017
sps-exhibition.com

Answers for automation



Register online for your free entry ticket now!

→ Go to
sps-exhibition.com/tickets

→ Register online using the following
registration number.



You are invited by

JVL Industri Elektronik A/S

hall 4, stand 4-301

1712322855

→ Receive your personal **season entry ticket** for 3
days free of charge via e-mail.

→ Bring the printed ticket to the exhibition.

Alternatively, you can redeem this entry voucher at the exhibition for a one-day ticket. Upon arrival fill out a registration form and submit it together with the entry voucher at the ticket counter. Prior sale to any third party is not permitted.

Organizer

mesago
Messe Frankfurt Group

Follow us



Official exhibition hashtag #sps_live

Further information: phone +49 711 61946-828 · fax +49 711 61946-92 · sps@mesago.com · sps-exhibition.com